

Barracuda @ Services and Products



GELSEN-NET
100% für Ort

Security Day

Florian Vojtech, Senior Manager Presales DACH



A dark, atmospheric landscape featuring a winding road along a body of water, with mountains in the background. The scene is dimly lit, suggesting dusk or dawn, with the water reflecting the ambient light. The mountains are silhouetted against a slightly lighter sky.

Who is Barracuda?



We're a global company with massive scale

 : **200,000**
CUSTOMERS WORLDWIDE

 : **32,000**
CHANNEL PARTNERS

 : **5,000**
MSP PARTNERS

 : **134**
COUNTRIES SERVICED

Malicious emails blocked
(per week)

280M

Emails archived
(per week)

1.3B

Protected customer
data

393PB

Zero-day network attacks blocked
(per day)

5M



We're trusted by analysts and customers

FORRESTER

Enterprise Email Security Wave



FORRESTER

Web Application Firewalls Wave



Gartner

Enterprise Network Firewall MQ



Best Customer Service
Best Machine Learning/AI



Best Email Security



Product of the Year
Secure Connector



Best Data
Protection
Software



Barracuda RMM
Managed &
Cloud Services
Winner



Finalist
Managed
Detection &
Response
category



Best WAF
& WaaS



Ransomware Protection
Company of the Year



Winner
CloudGen Access
for MSP



Winner
CyberSec Asia
Readers' Choice
Award 2023



Barracuda Solution Framework ("Trust Platform")

Managed Services / XDR

Deployment Choices / Flexible Consumption

Email Protection

Spam, Malware, Threats

Phishing & Impersonation

Account Takeover

Incident Response

Security Awareness

Data Protection

Backup

Archiving

Data Classification

Network Protection

Secure Access Service Edge

Zero Trust Security

Secure SD-WAN

Network Firewalls

IoT/OT Security

Application Protection

OWASP Top 10

Bot Protection

DDoS Protection

Client-side Protection

API Security

Product Platforms

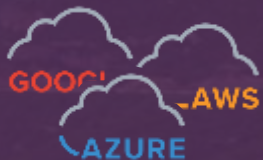
Threat Intelligence Platform



Barracuda Network Protection



The evolution of network security challenges



Public
cloud



SaaS
adoption



Cyber
physical
systems



Work from
anywhere



Shortage of networking and security
experts



Challenging economic environment

Provide easy-to-use & scalable solutions for

Universa1

NextGen Firewall
Security



Secure SD-WAN,
SD-branch, and
MPLS replacement



Secure cloud
connectivity and
security in the
cloud



Work-from-anywhere
and zero trust
network access



Service providers

Managed security
service provider



Industria1

Operational
technology &
factory floor
security



Security & availability
for internet connected
devices (IIoT)



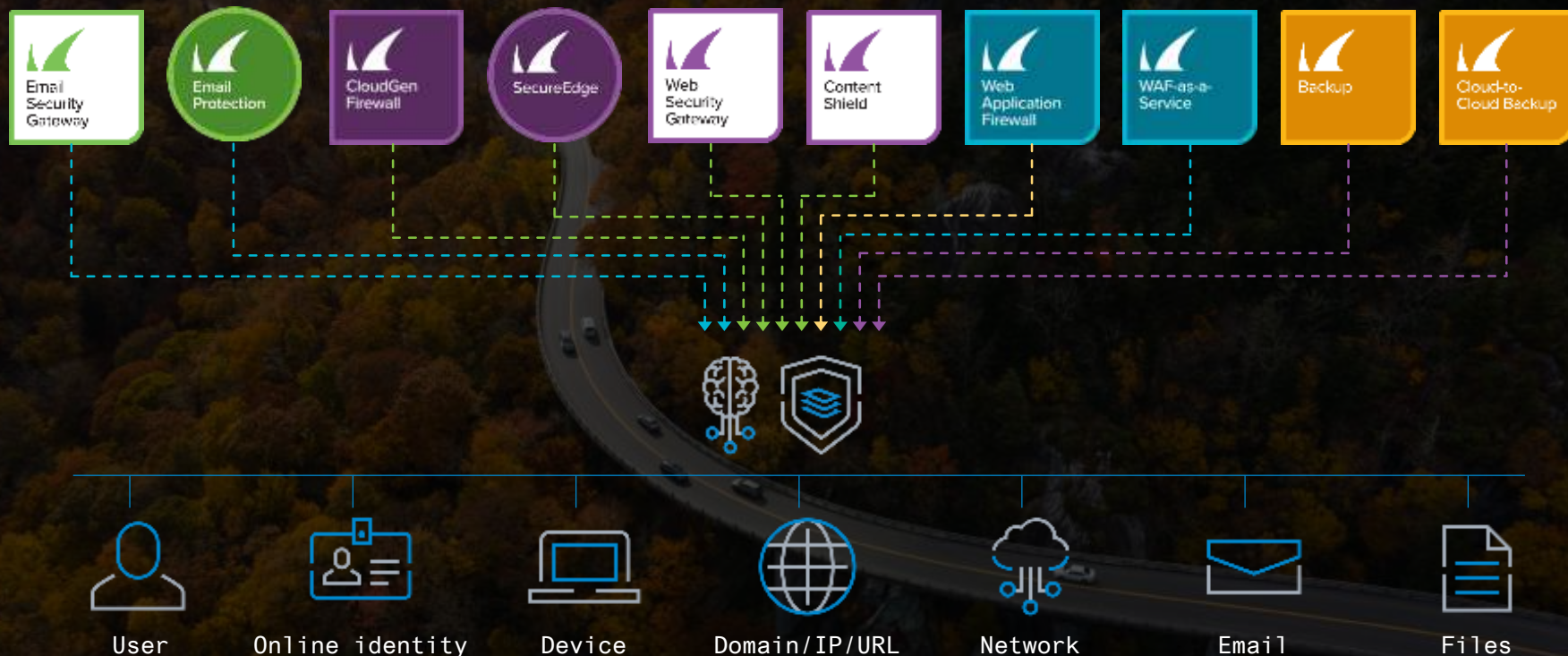
Edge compute &
predictive
maintenance



Full next-generation security



Barracuda Advanced Threat Protection



ATP: Botnet & spyware protection

DNS sinkhole using hostname reputation Database

(needs ATP subscription)



Intelligent traffic routing

Application-based provider selection – Breakout to the internet



Barracuda Email Protection

Securing your email, users, data, and access



Email attacks in 2024: what's the risk?



75%

Organizations experienced a successful email attack in 2023



\$1M

Serious attacks are expensive:

- Downtime
- Data loss
- Reputation
- Ransoms

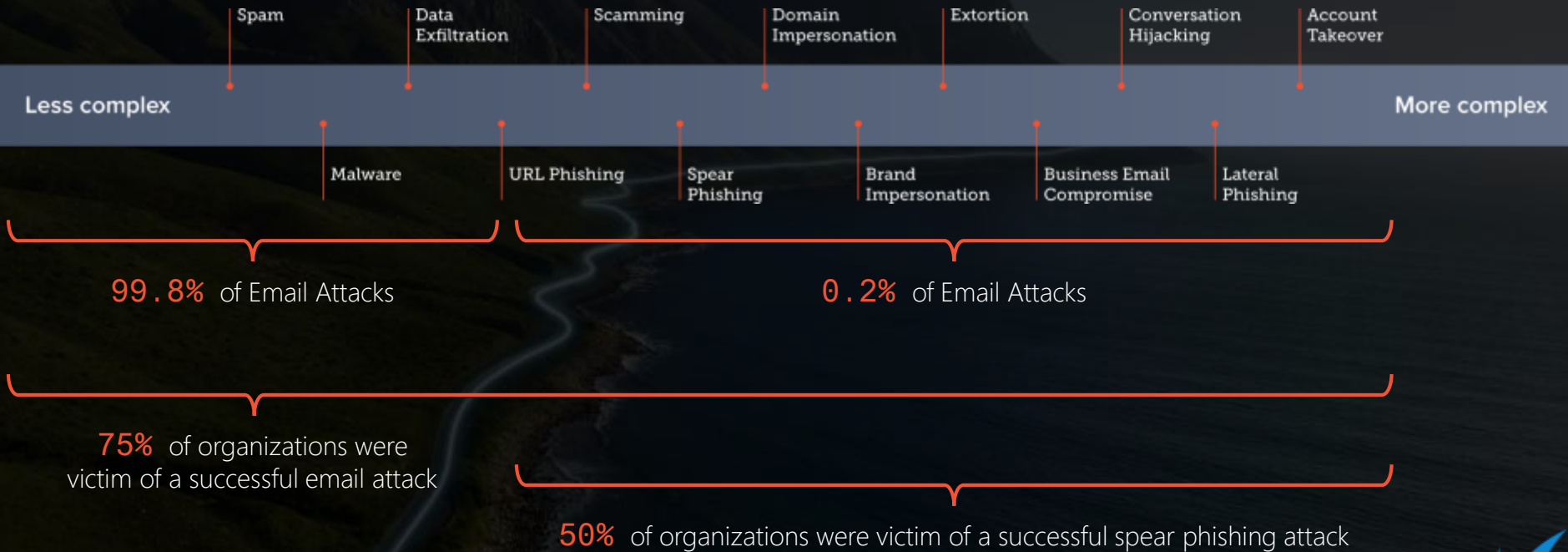


98%

Organizations are not fully prepared to deal with email security risks



Phishing is **STILL** the primary risk surface



Secure your email, users, data, and access

THREAT PREVENTION

Spam, Malware, and ATP
Phishing and Impersonation Protection
Account Takeover Protection
Domain Fraud Protection
Web Security
Zero Trust Access for Microsoft 365

DETECTION AND RESPONSE

Incident Response
Security Awareness Training

DATA PROTECTION AND COMPLIANCE

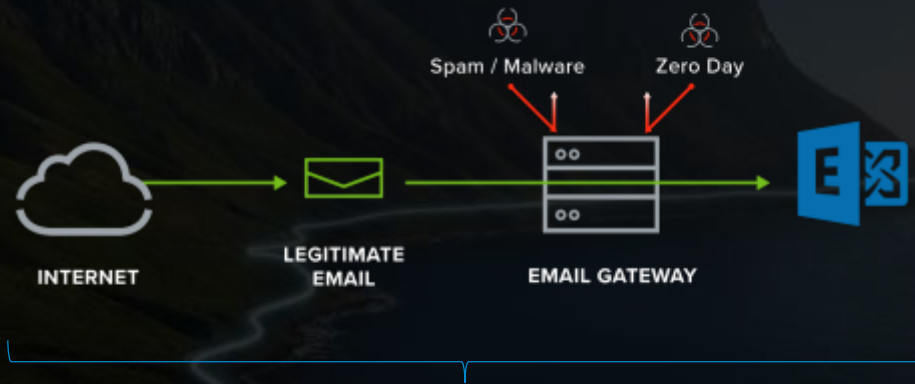
Email Encryption and DLP
Cloud-to-Cloud Backup
Cloud Archiving Service
Data Inspector™



Barracuda
Email Protection™

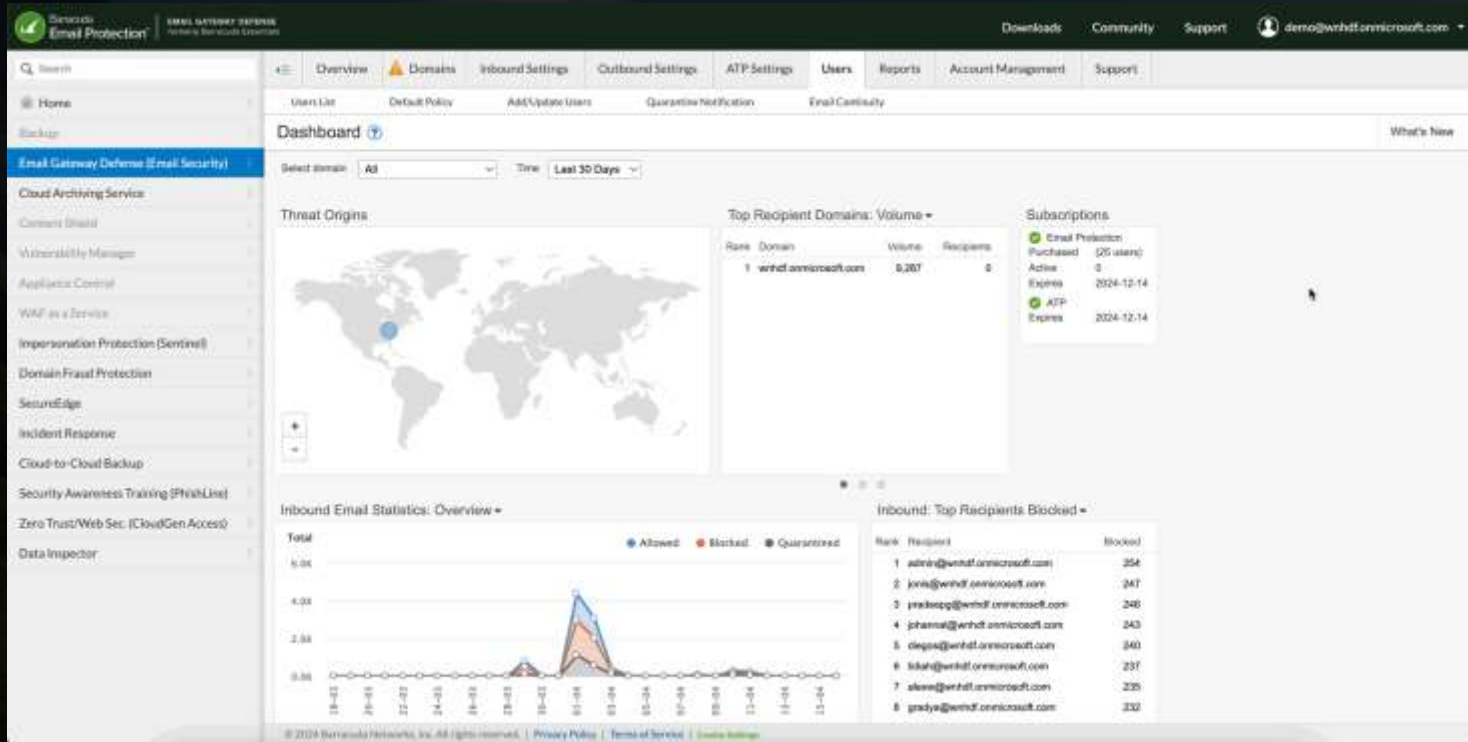


Gateway defense: stop volumetric attacks



- Blocks spam and malware
- Protects against bad links and attachments
- Intercepts sensitive data leaving your organization
- Encrypts outbound email





“Our experience with Barracuda Email Protection has been absolutely positive. The number of emails the gateway catches is fantastic, as well as the ease of configuring blocking criteria.” – System Administrator @ Civil Engineering Firm

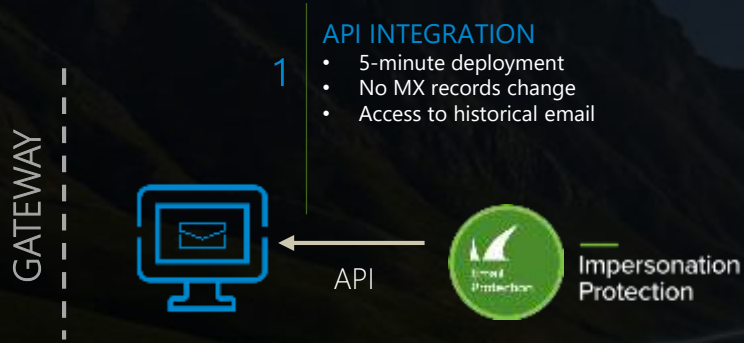


“We’re seeing advanced spear phishing in our inboxes. We’re worried about account takeover and ransomware.

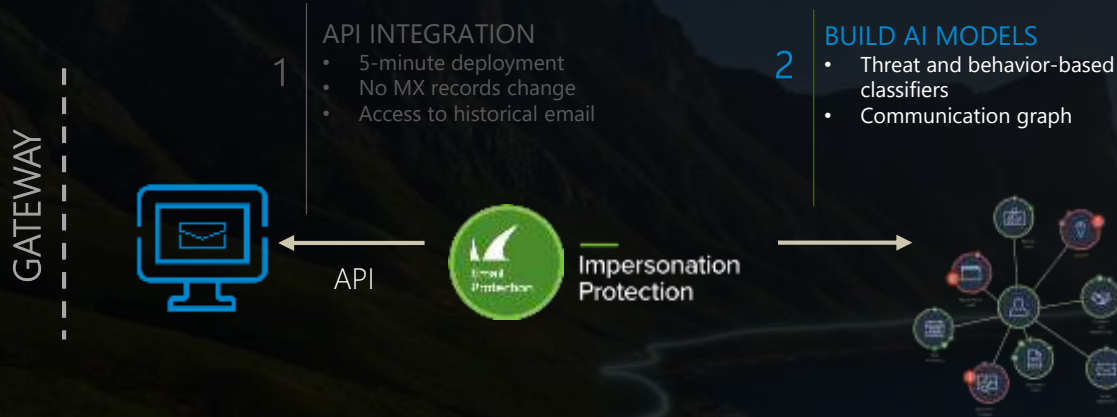
How can we prevent it?”



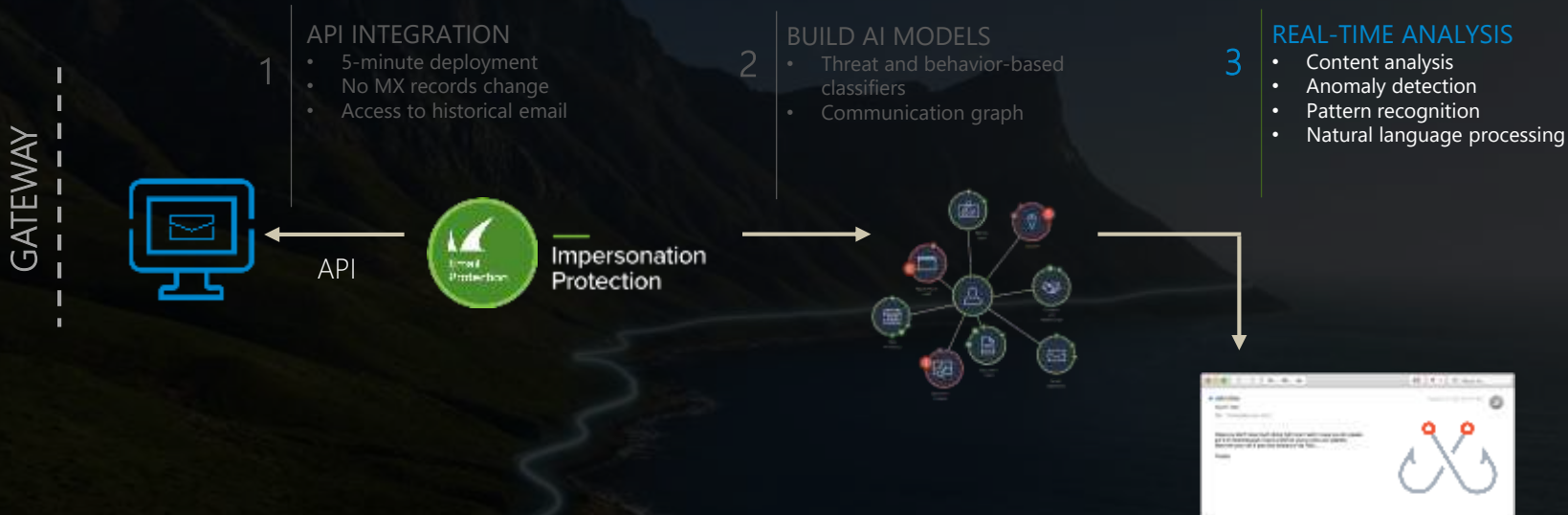
AI-based inbox defense: stop targeted attacks



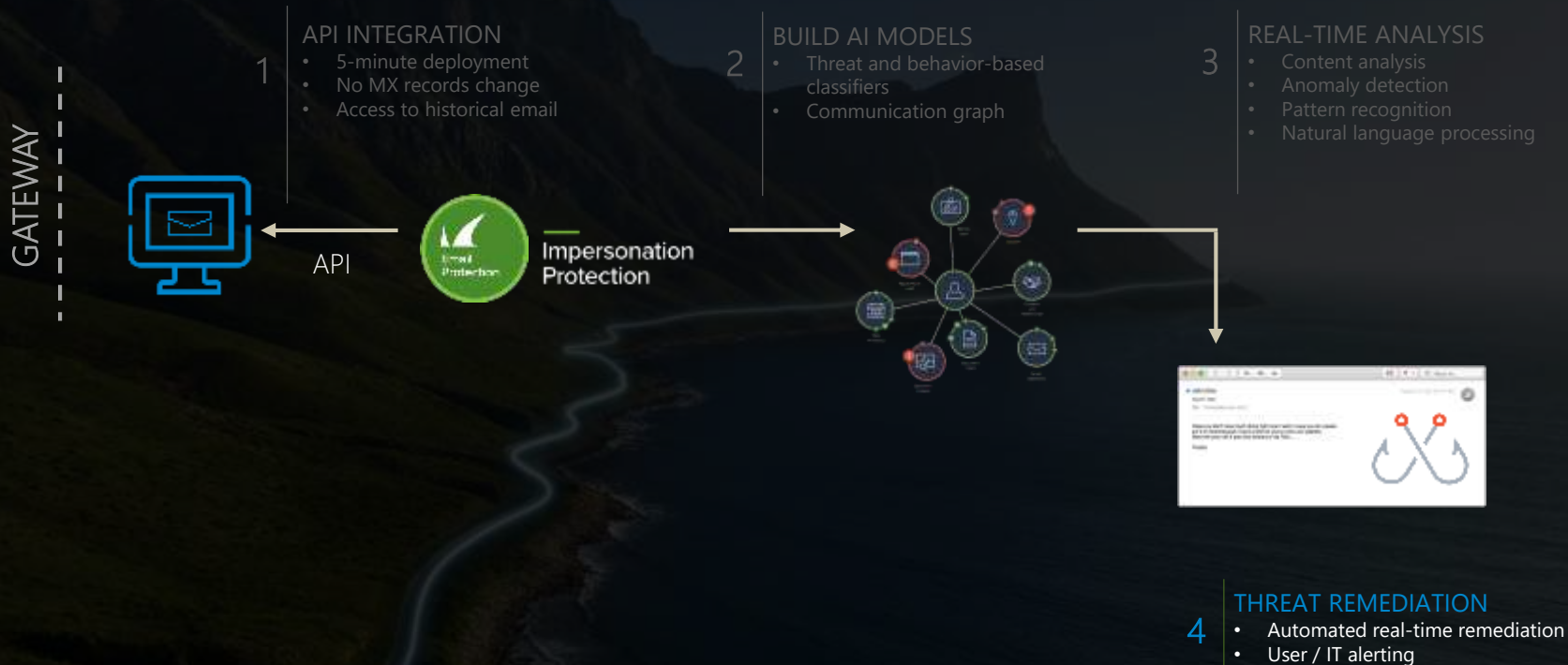
AI-based inbox defense: stop targeted attacks



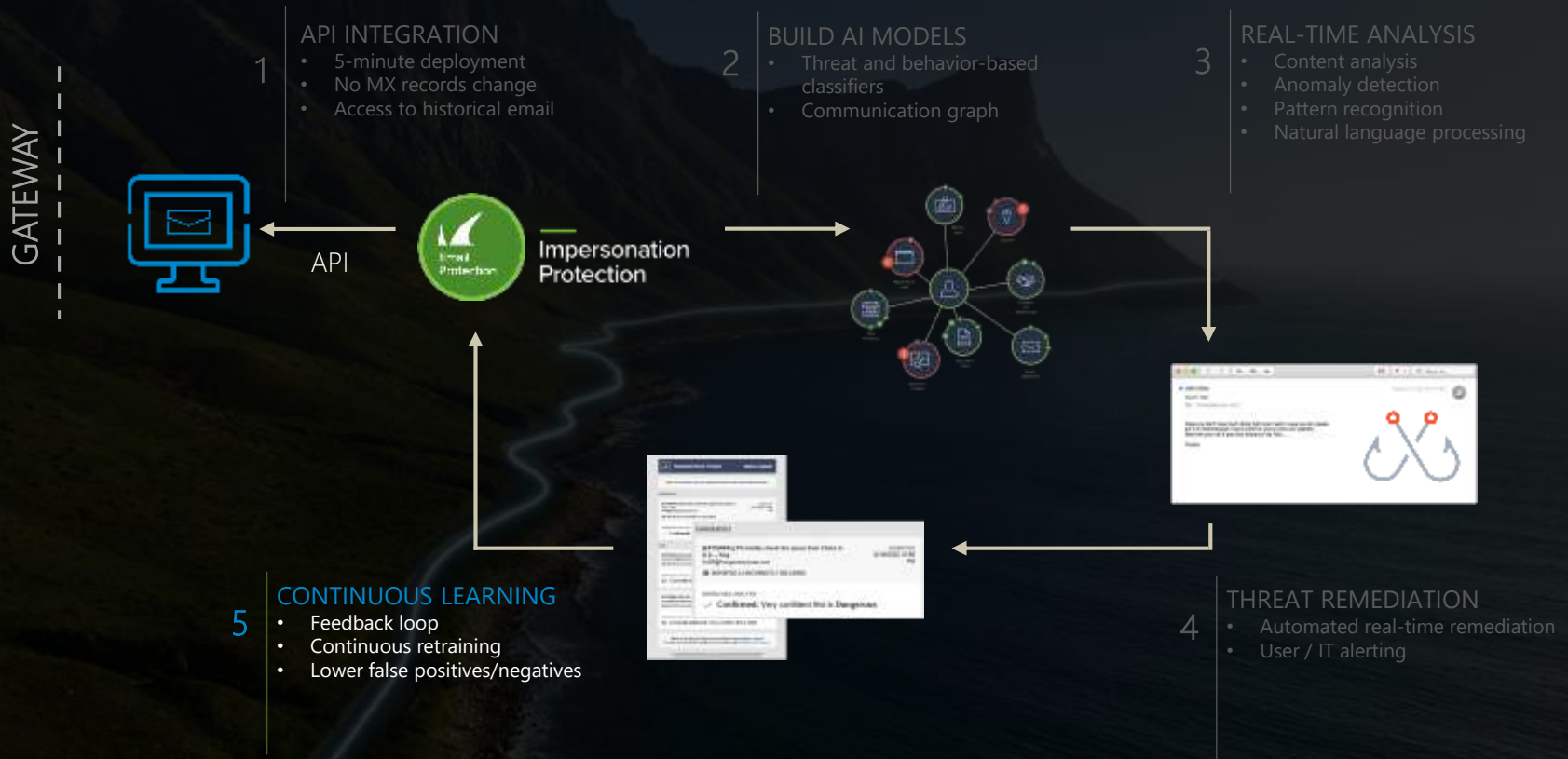
AI-based inbox defense: stop targeted attacks



AI-based inbox defense: stop targeted attacks



AI-based inbox defense: stop targeted attacks



Account Takeover Protection



Infiltration

Prevent phishing and ATO attempts with AI



Reconnaissance

Detect patterns of malicious behavior:

- Suspicious login
- Impossible travel
- Rule changes
- Sent messages
- And more



Harvest Credentials

Prevent lateral movement by flagging malicious internal communications



Monetization

Remediation options:

- IT alerts
- Built-in playbooks
- Remediate malicious emails
- Alert external users
- And more



Microsoft | **Barracuda Email Protection** | IMPERSONATION PROTECTION | What's new | Barracuda Demo

Report missed attach **Test AI** ⚙️

Protection status for Barracuda Demo

Email threats
Last 6 months, updated daily

487
Threats protected

0.000%*
False positives (0)

2.8k
Total emails scanned

Last Email Processed: May 03, 2024 at 2:01 PM

[View real-time phishing alerts](#)

Account takeover
Last 30 days

0
Outstanding alerts

Last Alert: Apr 26, 2024 at 10:42 AM

[View account takeover alerts](#)

Domains

2 Total

1 Reporting mode

0 Enforcement mode

[View DMARC reporting](#)

Licensing information

19 Licenses

Microsoft 365 Mailboxes

Serial Number: 022740

[View mailboxes](#)

Spear phishing attacks

Emails in your account that have been identified as fraud attempts

[Export to CSV](#)

Search 🔍 All attack types

Date	From	To	Attack type	Confidence	Status	
May 03, 2024 at 7:56 AM	Pradeep Gupta pradeepg@weirdf.com@msn.com	Angela Brown <angela@creativefuel.com> subject: New Client Idea for you, Ra...	Scanning	Very high	Moved to junk folder	🗑️ ⚙️
May 03, 2024 at 7:56 AM	Lee Gu leegu@weirdf.com@msn.com	chexaema@bqotz.com <chexaema@bqotz.com> subject: Are you looking for a professional PCB manufacturing? Sherat...	Scanning	Very high	Moved to junk folder	🗑️ ⚙️
May 03, 2024 at 7:53 AM	Miriam Gohari miriamg@weirdf.com@msn.com	Bawne Bakore <bawne@weirdf.com> subject: AVAILABLE...	Impersonation	Very high	Moved to junk folder	🗑️ ⚙️

“What made the biggest difference was the phishing and impersonation protection that uses AI to detect the kind of account-takeover threats that were our biggest immediate problem.” – IT Manager @ Restaurant Chain



Domain Fraud Protection: stop spoofing

spookasa.com [Back to domain](#)

Source identifier by DMARC
Last 30 days

Unknown	Approved	Not approved
1	2	0

Configure SPF and DKIM on approved sources

Source identifier table:

Source	Email reported	DMARC	Actions
SendGrid (sendgrid.net)	4,224	100% failed	View logs Back as not approved
Microsoft Office 365: Outlook (outlook.com)	3,356	97% passed	View logs Back as not approved
Outlook.org.uk	1	100% failed	View logs Back as not approved

Top countries sending email (Last 30 days)

Country	Report
Australia	1,000
United States	999
Japan	200
Netherlands	10

View DMARC configuration

DMARC: v=DMARC1; p=reject; sp=reject; dkim=reject; rua=mailto:; ruf=mailto;

SPF: v=spf1; include:_spf.sendgrid.net; ~all

DKIM: Not configured for any of your top source domains

Simplify email authentication and DMARC enforcement

- Automated DMARC reporting & visualization
- DKIM/SPF configuration and troubleshooting
- Report on misconfigured domains

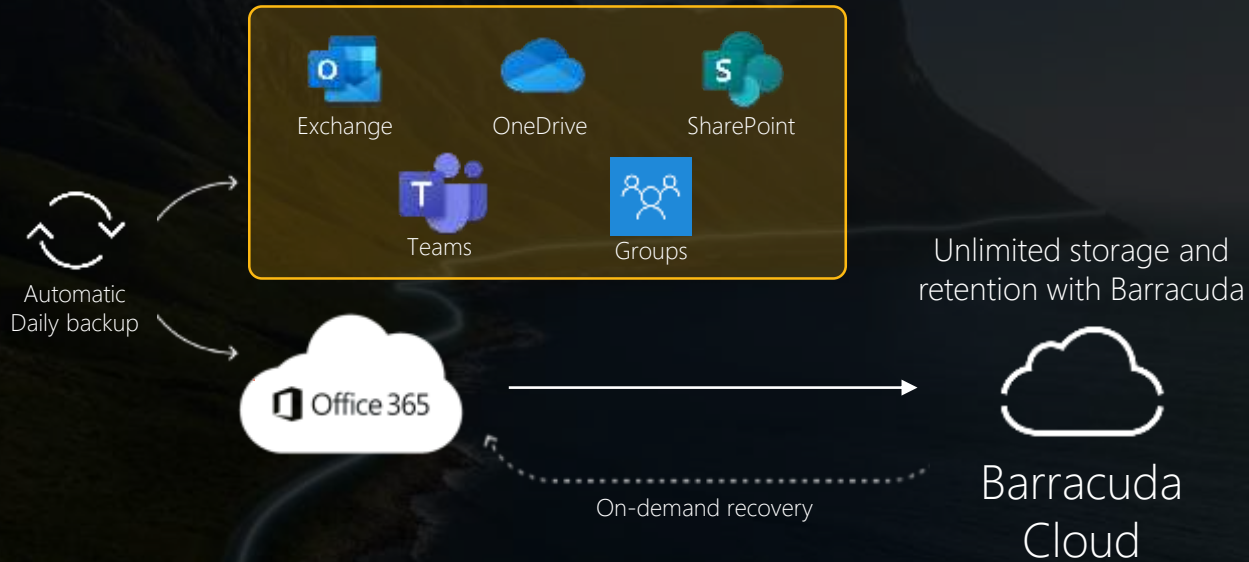
4,224 DMARC reports for SendGrid (sendgrid.net)

Fail (98%) Pass (1%)

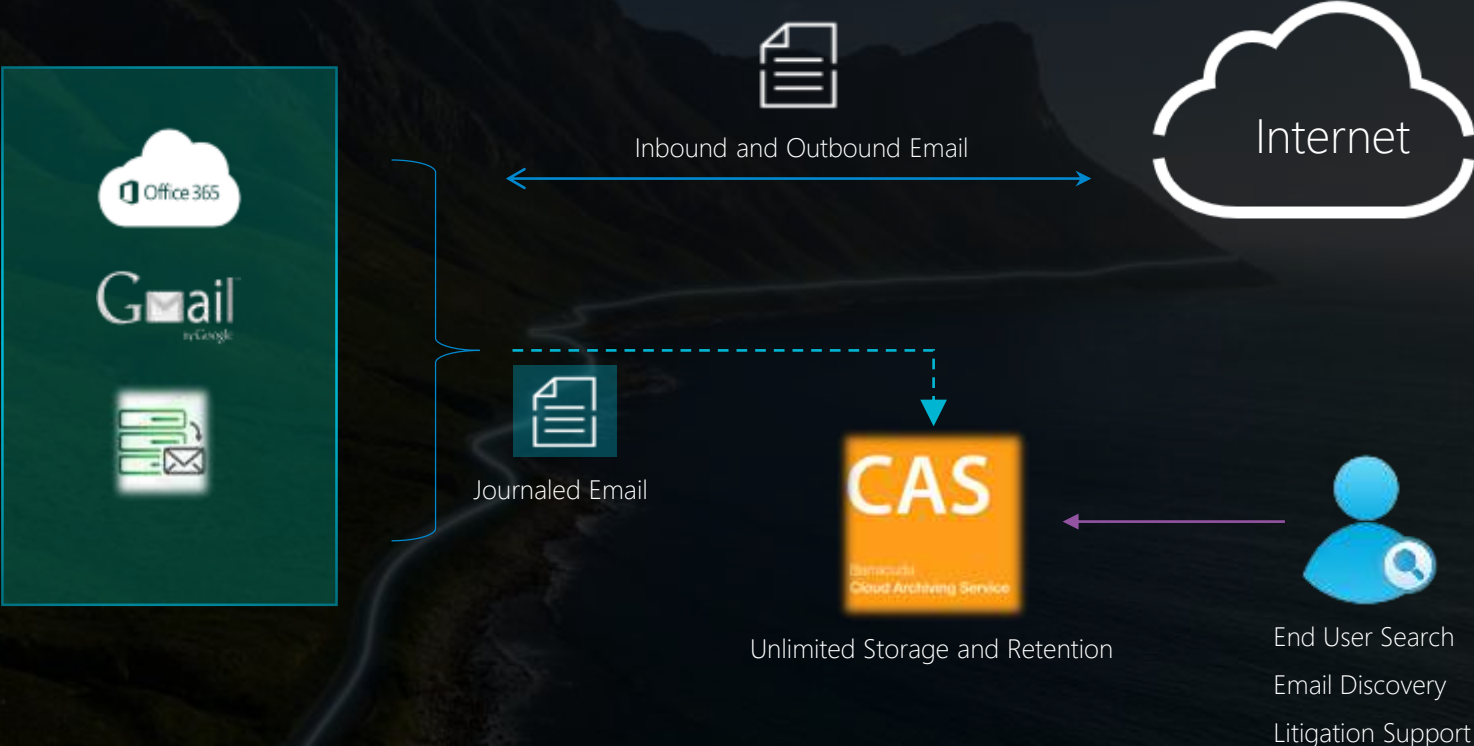
Policy	SPF status	SPF domain	DKIM status	DKIM domain	Actions
3,728 92% of failures	Passed SPF Misaligned	sendgrid.net	Passed DKIM Misaligned	sendgrid.net	See recommendations
468 7% of failures	Passed SPF Misaligned	sendgrid.net			See recommendations



Cloud-to-Cloud Backup: set and forget



Cloud Archiving: long-term retention



Zero Trust Access for M365: secure access

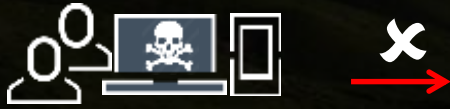
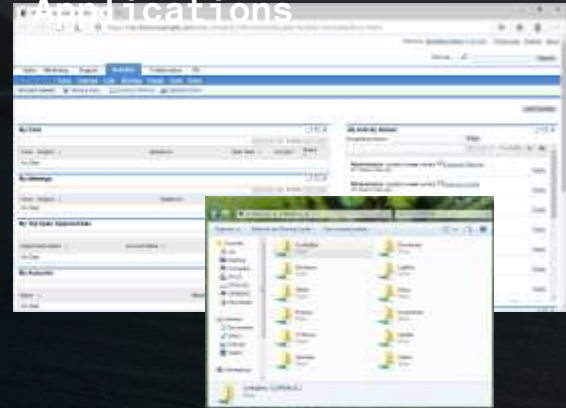


In the office or Remote

Zero Trust Access

- Identity-Based User Authentication
- Device Authentication
- Device Health Checks (ongoing)
- Per-Application Permissions
- Central Management and Logging
- On-Demand Autoscaling
- Simple Always-On Connectivity

Microsoft 365 Applications



Compromised Accounts

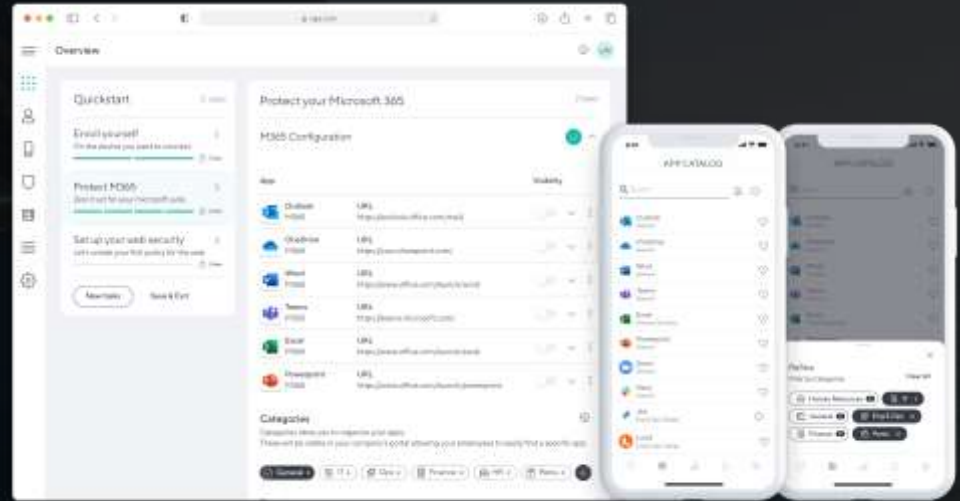


Insecure or Untrusted Devices



Simple to deploy and use

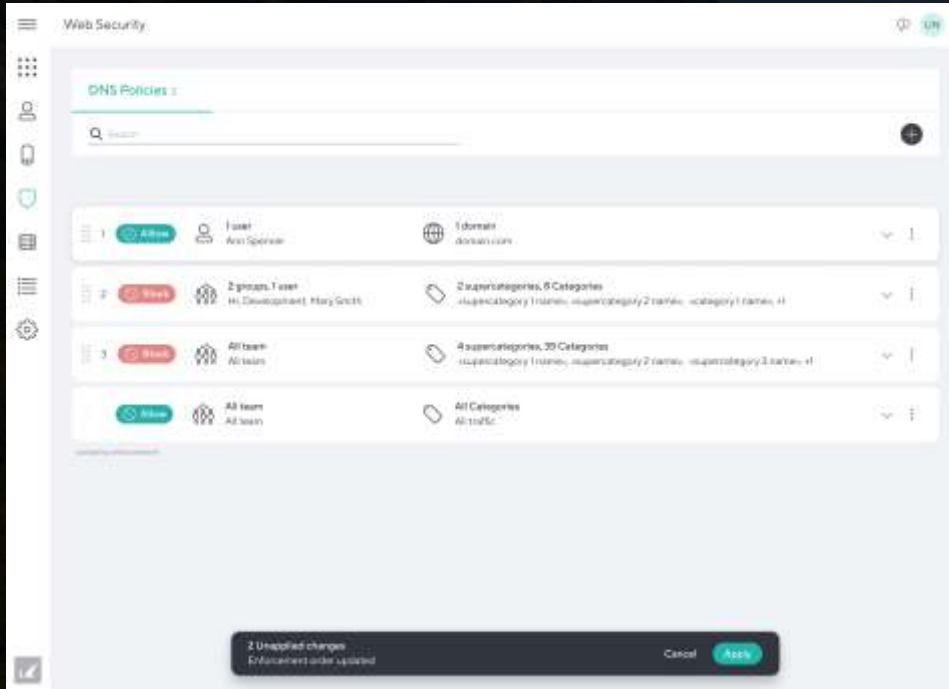
- Deployment – including setting up user groups and policies – takes less than 1 hour
 - You can mass-provision devices or have self-enrollment via the major app stores
- End-user application is streamlined and easy to use



“What about web content? How can we protect our employees from visiting malicious or inappropriate websites?”



Web Security: protect your browsing



Protect users from malicious or inappropriate web content no matter where they work

- Filter content at the DNS level
- Real-time threat intelligence
- Flexible enforcement by user-group and location
- Contractor and remote employee coverage
- Centralized management and granular reporting



“We also need to train our employees – for compliance, and so that they’re more vigilant.

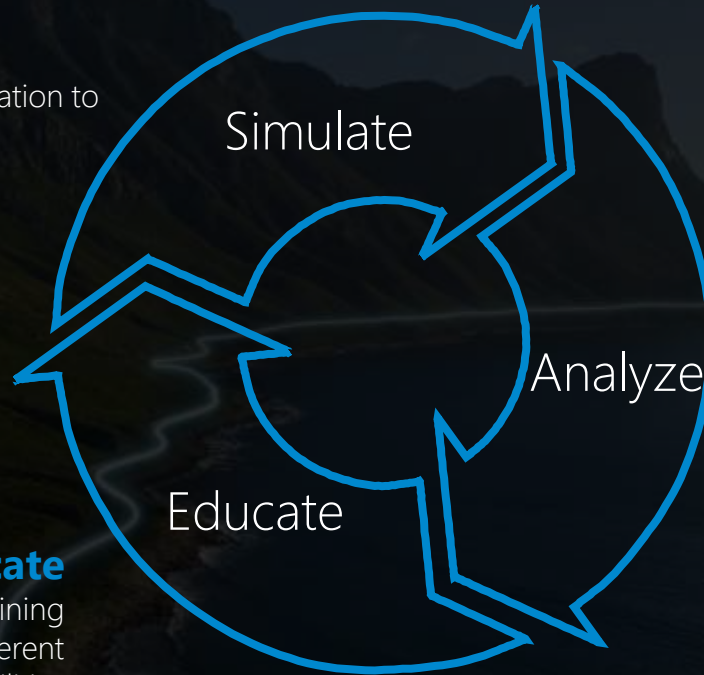
We have some habitual clickers.”



Security Awareness Training: the process

Simulate

Real-world threat simulation to assess user awareness



Analyze

Detailed reporting metrics to determine threat risk and inform the next campaign

Educate

Extensive library of training content tailored for different learning styles and abilities



Multi-modal, multi-country content

Animated videos (3-5 mins)



Infographics



Threat spotting guides



Curriculums



“With the advanced anti-phishing protection and security awareness training, we have built the best security against ransomware getting in.” – Superintendent of Technology @ Texas-based Independent School District



See for yourself with a free Email Threat Scan



Barracuda
Email Threat Scanner™

- Identify gaps in email security
- Find threats inside Microsoft 365 inboxes
- See threats visualized in multiple ways
- Get a shareable report about threats
- Start a free trial directly from the results!



21,000

Organizations already run the scan

20M

Mailboxes scanned
for threats

21M

Spear-phishing
attacks identified



An aerial photograph of a concrete arch bridge spanning a vibrant turquoise river. The bridge has a single arch and a road with a white car driving across it. A yellow kayak is visible in the water below. The surrounding area is lush with green trees.

Thank You

